



Dark Sky Parks in the UK

IDA & CfDS

School of Law, De Montfort
University UK

mart@dmu.ac.uk

A GREEN LIGHT TO DSP

- RCEP 6.4 those responsible for national parks etc “seek to eliminate unnecessary outdoor light and to better design and manage that which cannot be eliminated, and also that efforts are made to retain or create dark skies over urban areas so that people in major centres of population may have access to the night sky”

- Also offer an economic benefit for remote areas
- This has most definitely been taken onboard
- Also offer a more natural environment for wildlife

UK DARK SKY PARKS: PRESENT AND FUTURE

EXISTING:

- 1. Galloway Forest Park: Scotland 2009
- 2. Sark: Channel Islands 2011

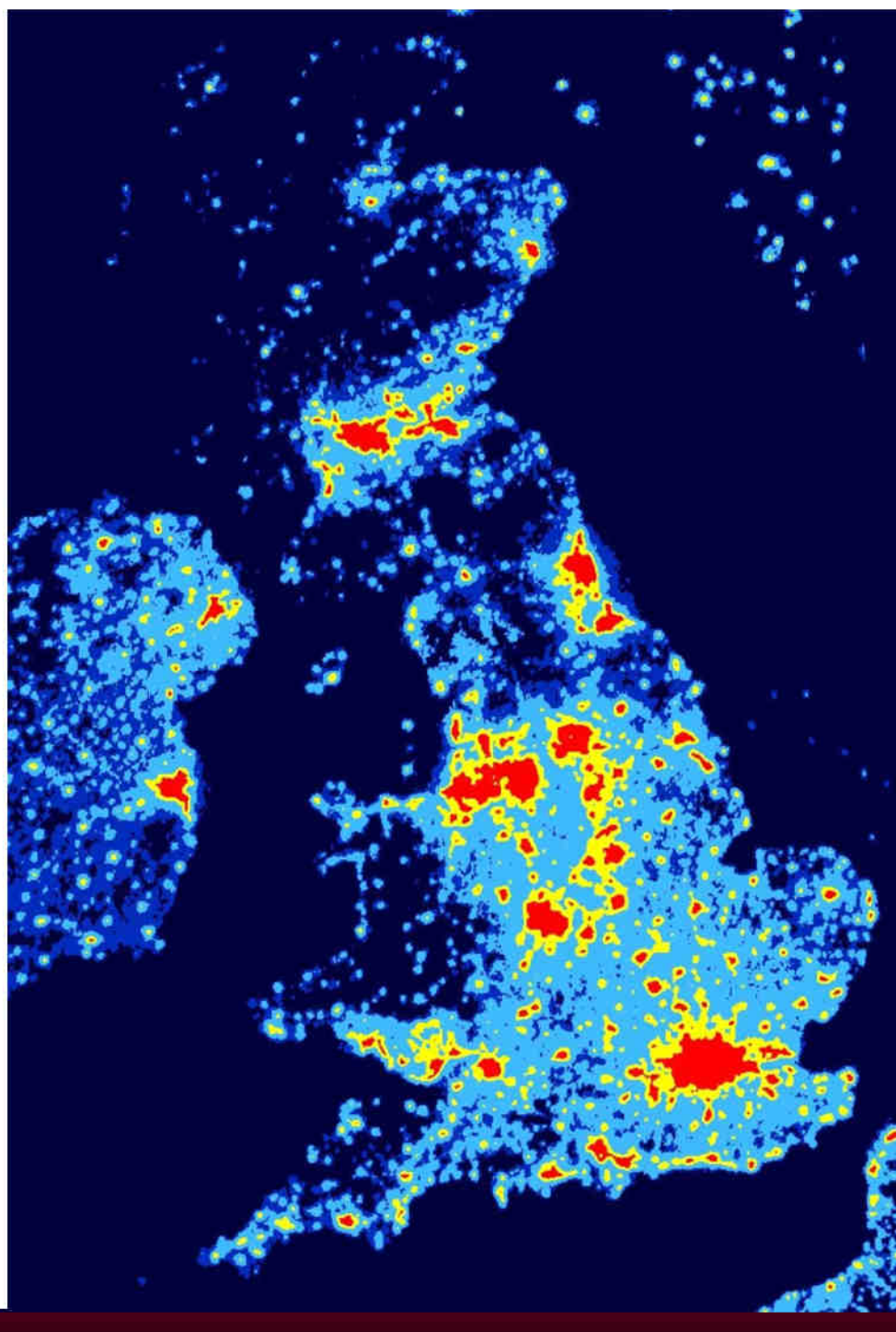
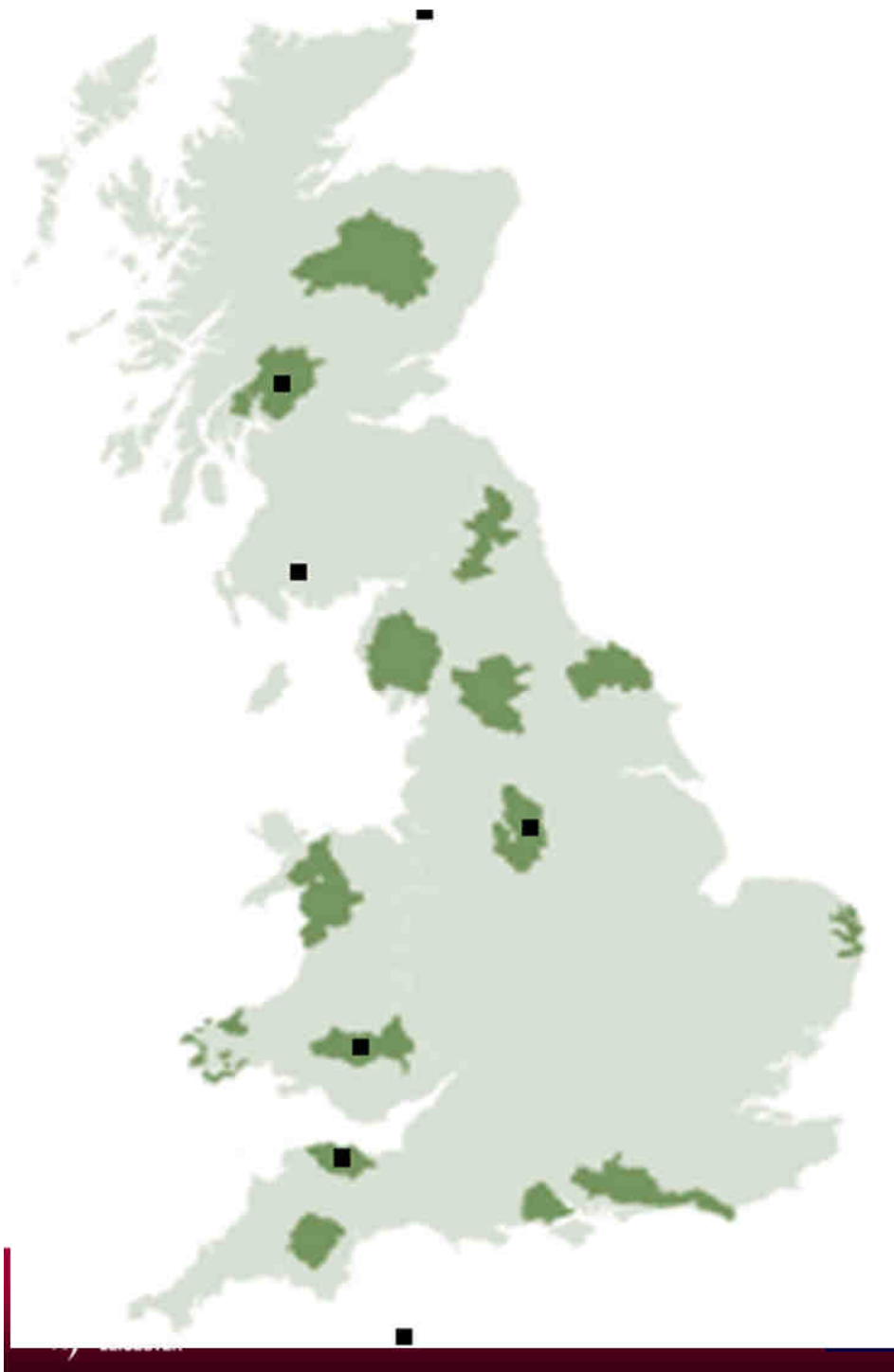
PENDING:

- 3. Exmoor National Park: England 2011?

UK DARK SKY PARKS: PRESENT AND FUTURE

FUTURE

- 4. Orkney: Scotland
 - 5. Loch Lowmond: Scotland (Trossachs)
 - 6. Peak District: England
 - 7. Brecon Beacons: Wales
-
- Rumours of Alderney... Channel Islands



Orkney-

Trossachs and Loch Lomond-

GALLOWAY FOREST PARK.

Peak District-

Brecon Beacons-

Exmoor-

SARK-



1. GALLOWAY FOREST PARK

- First UK (and joint first out of USA) DSP
- With [Zselic National Landscape Protection Area](#)
- 2009 Gold Tier
- Park established in 1947
- 300 square miles, Forestry Commission Scotland
- Very accessible (esp. Edinburgh/ Glasgow)

- GFP contributes annually around £11m in to the region (excluding timber)
- In 2006 a tourism strategy was developed
- Education- Wigtownshire Astronomical Society has set up an observatory in the Park
- Major astronomical events

GALLOWAY FP

Image from Clateringshaws

(Picture by Wigtownshire AS.)

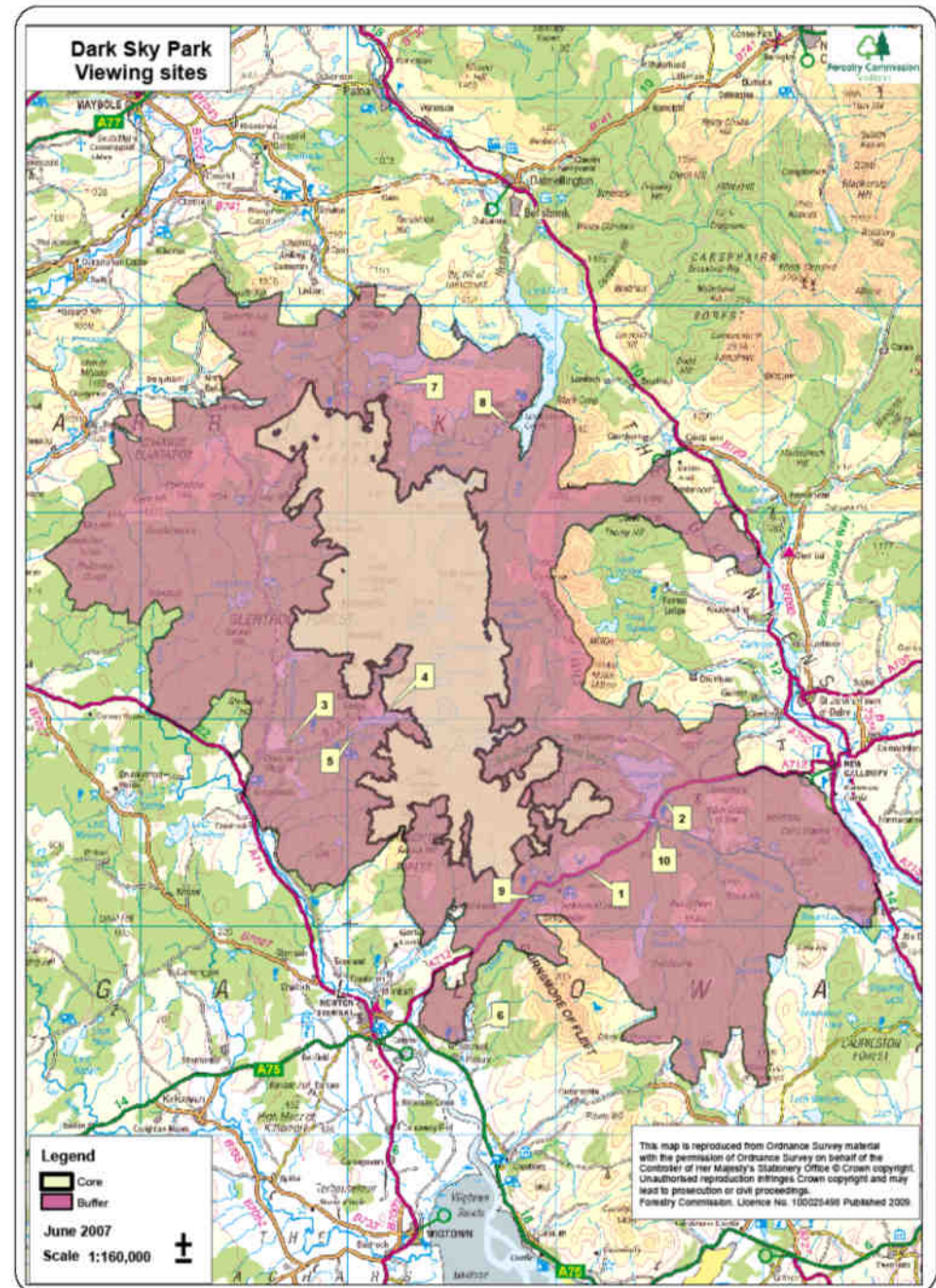


THE GALLOWAY FOREST PARK

FORMULA

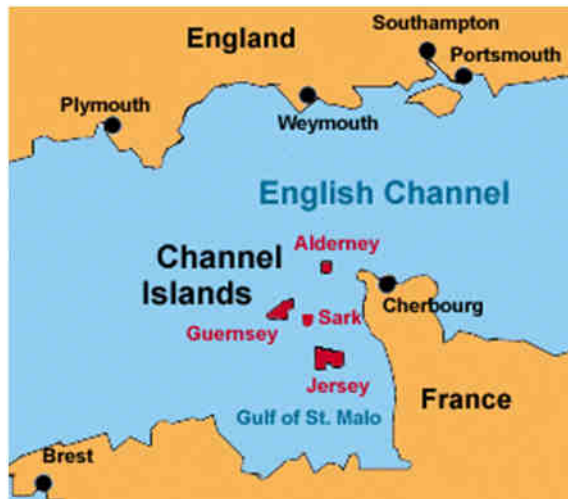
- Application contained
- A sky survey
- Lighting management plan
- Suggested (accessible) observing sites
- Local accommodation
- (Keith Muir Forest Commission & Steve Owens (IYA2009) were primarily behind the Park)

WEBSITE LISTS 10 GOOD OBSERVING SITES



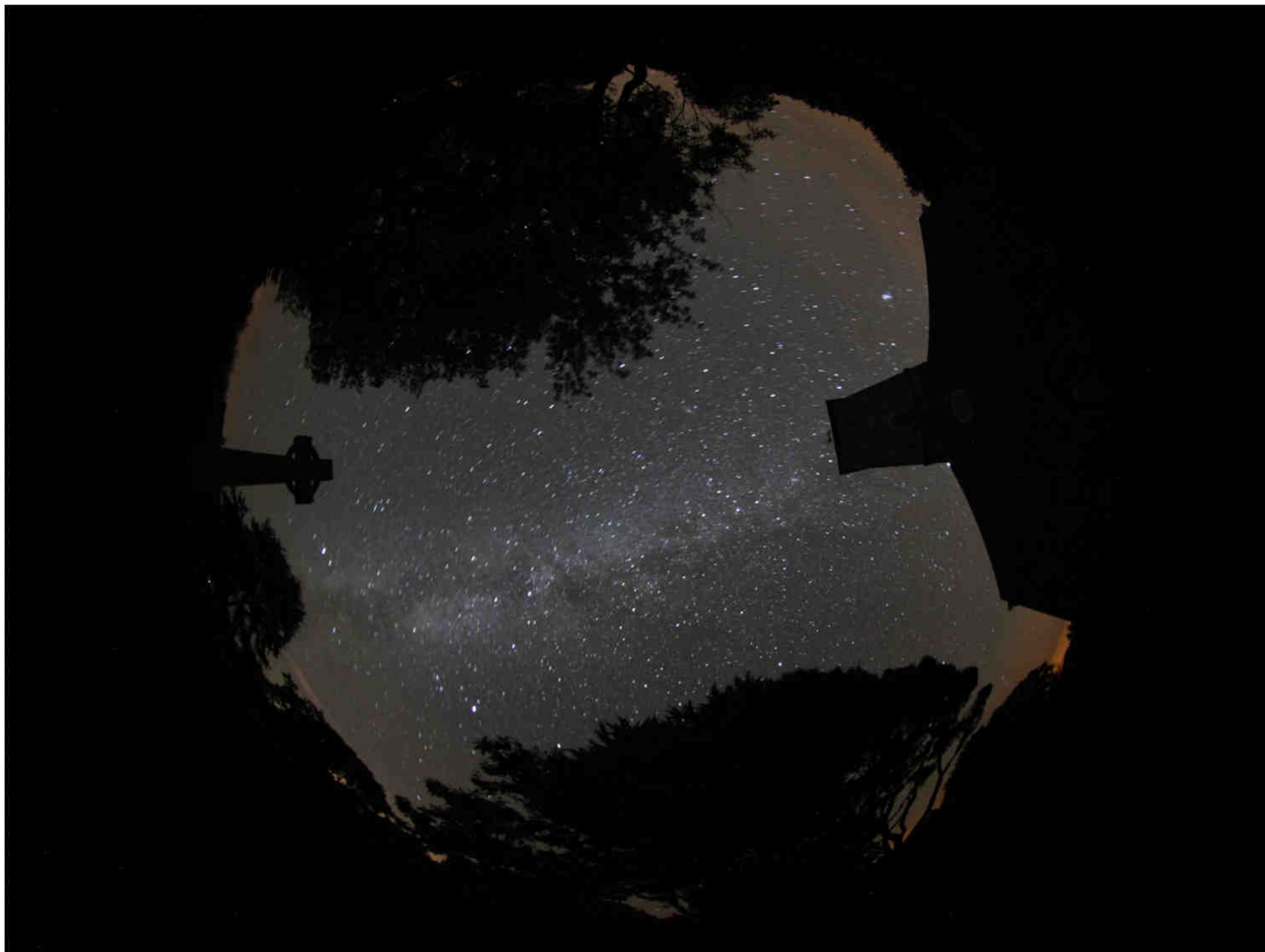
2. SARK: DARK SKY ISLAND

- Channel island
- You need to fly and/ or ferry
- Status awarded in 2011
- 650 population
- No cars or street lighting
- LP from neighbouring islands (SQM 21.3/ 21.4)
- High tourism







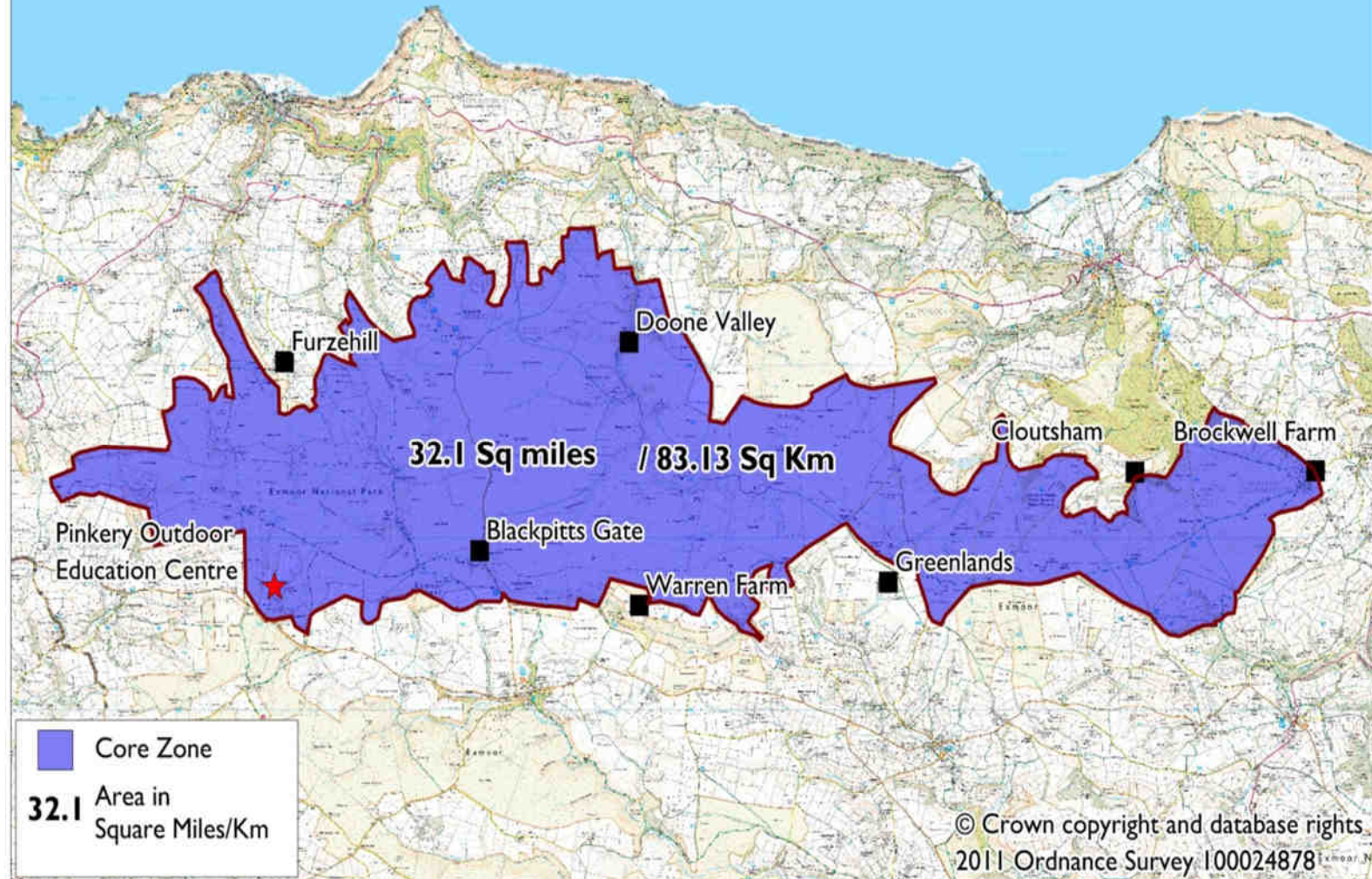


FUTURE: EXMOOR

- Application pending
- South Western England
- Very accessible
- Major existing holiday infrastructure
- Average SQM 21.3 (not a perfect sky)



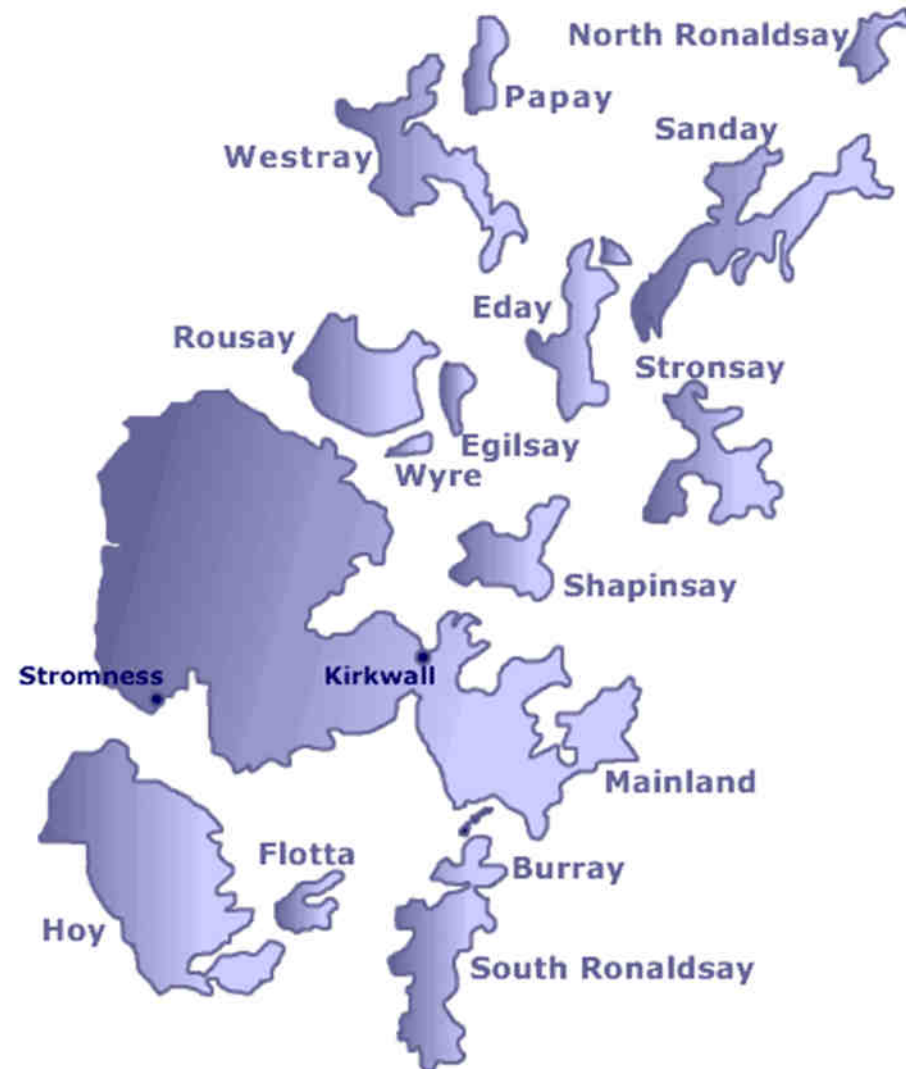
Map showing Core Zone Area





FUTURE: ORKNEY

- North Ronaldsey
- Remote- North Coast of Scotland
- Pending LM plan
- Flight needed
- Promises very dark skies
- Excellent opportunity for aurorae

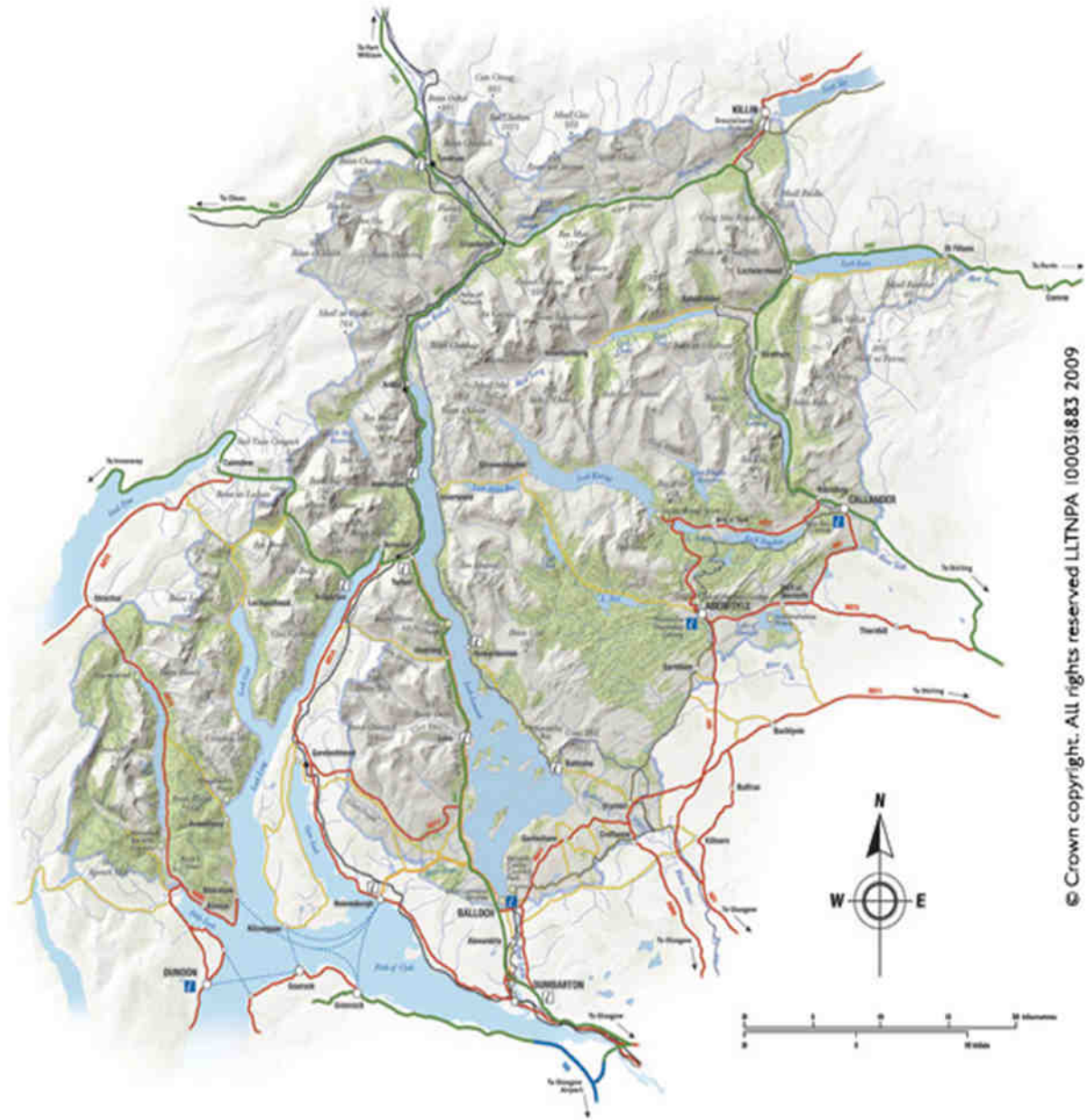


FUTURE: LOCH LOMOND SCOTLAND



FUTURE: Loch Lomond

- Trossachs National Park
- Status:
- Lighting management plan out to tender



FUTURE: THE PEAK DISTRICT



PEAK DISTRICT

- Not as advanced
- However, much public education
- Helped by Macclesfield AS
- 5 years away?
- Very accessible, between Sheffield and Manchester

FUTURE: BRECON BEACONS WALES

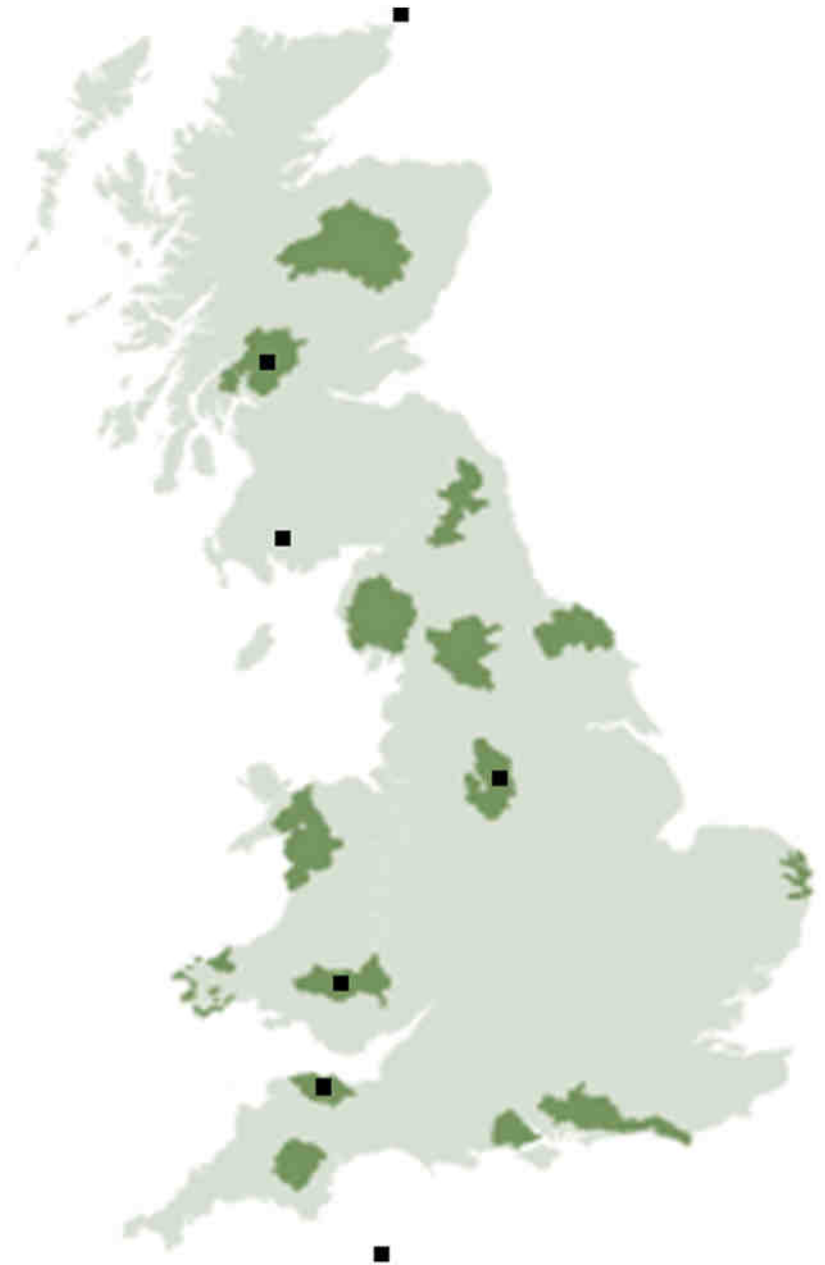


BRECON BEACONS

- About to carry out the dark sky survey
- Application several years away

DIRECTIONS?

- One Scottish existing
- Hopefully one English & one Welsh park coming
- So, a park near to most people on mainland UK
- No plans in Ireland?



MYDARKSKY

- Macclesfield AS has started a website for monitoring the UK night sky
- EXCELLENT resource
- Should help in planning dark sky places
- <https://www.mydarksky.com>

MART@DMU.AC.UK