

**\*Villes & Villages Etoilés\***  
**\**Starry cities and villages*\***



Nicolas Bessolaz, Pierre Brunet  
*Association Nationale pour la Protection  
du Ciel et de l'Environnement Nocturnes*  
[info@anpcen.fr](mailto:info@anpcen.fr)  
[www.anpcen.fr](http://www.anpcen.fr)





# Third edition in 2011

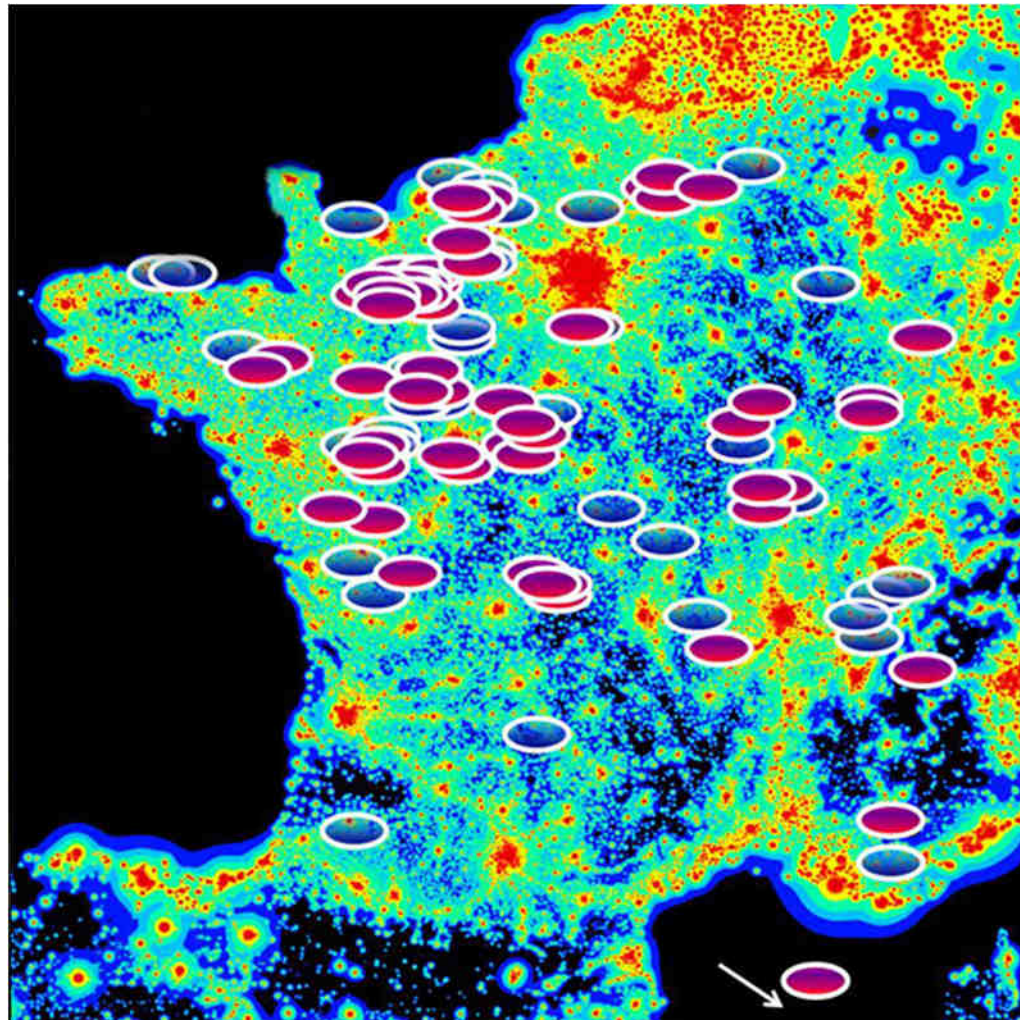


1<sup>st</sup> European Symp. for the Protection of the Night Sky, 6<sup>th</sup>-8<sup>th</sup> Oct. 2011, Osnabruck, Germany





# 102 VVE certified cities between 1 and 5 stars



38 towns in  
Edition 2009

64 towns in  
Edition 2010



## Association Nationale pour la Protection du Ciel et de l'Environnement Nocturnes

Retrouvez toutes les informations et de nombreux conseils sur [www.villes-et-villages-etoiles.fr](http://www.villes-et-villages-etoiles.fr)

Promote the quality of your nighttime environment, control energy costs and maintenance costs associated with public lighting, protect species living at night and in need of darkness, limit greenhouse gas emissions, optimize light for a better quality of life. The ANPCEN invites you to participate in the third edition of the national "Starry Cities and Villages" and to win stars announcing the commitment of your municipality for the protection of heaven and the environment at night

### Application for certification

## Starry cities and villages 2011

Document to be used to collect data. Then, thank you to exploit the online questionnaire at: [www.villes-et-villages-etoiles.fr](http://www.villes-et-villages-etoiles.fr) before November 1, 2011

### Applicant

City : \_\_\_\_\_ Postal code : \_\_\_\_\_ INSEE Code : \_\_\_\_\_ E-mail : \_\_\_\_\_  
 @ \_\_\_\_\_ Tél : \_\_\_\_\_ Full name of Mayor :  Mme  M  
 \_\_\_\_\_ City hall address : \_\_\_\_\_  
 Person(s) to contact : \_\_\_\_\_ Courriel : \_\_\_\_\_  
 @ \_\_\_\_\_ Tél : \_\_\_\_\_ I, \_\_\_\_\_ acting as  
 \_\_\_\_\_ present the city \_\_\_\_\_ to obtain the label «Starry cities and villages».

Date, stamp and signature

### Goal of the elected representative and situation of your town

Number of inhabitants : \_\_\_\_\_

If you have a public lighting, indicate the total number of external light sources \*: \_\_\_\_\_ Otherwise, select  No

☛ Has your town signed the ANPCEN treaty for the Protection of the night sky and the night environment ?

Yes  No If yes, date of signature : \_\_\_\_\_

☛ Has your town signed another treaty taking really into account light pollution ?

Yes  No If yes, which precisely (name and date of signature) ? : \_\_\_\_\_

What are the actions of your municipality already implemented to reduce pollution and light pollution ?

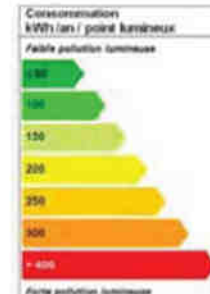
- use of light sources of lower power : q Yes q No
- use of full cut-off lighting, horizontal and closed flat glass (p.3, § 1 et 2) : q Yes q No
- decrease of the street lighting number : q Yes q No
- Switch on and switch off by astronomical clocks : q Yes q No
- priority use of yellow/orange lights (High or Low pressure Sodium) and removal of white light sources : q Yes q No

What is the budget of the municipality associated with the consumption of electrical energy ? \_\_\_\_\_

Energy related to lighting :

What energy savings target do you have and when ? \_\_\_\_\_

• On what level of consumption do you stand ? \_\_\_\_\_



ky, 6<sup>th</sup>–8<sup>th</sup> Oct. 2011, Osnabrück, Germany



**Energy saving :**

What savings target in the budget do you have and when? \_\_\_\_\_

Lighting : what is the objective in terms of control and lighting reduction (spatial direction of light and light levels) ?  
on what timescale ? \_\_\_\_\_

## Regulation of public and private lighting

- Is there a document on your town (deliberation specific lighting by the City Council or document annexed to the PLU or POS) with technical specifications regulating the light power, the direction of flow and hours of operation of lighting public and private compliance with the latter being required on all or part of the territory of the town ? • Yes • No

### Public street lighting

Installed Power : Two possibilities in order to determine the total electrical power of the light sources

Case 1 : The power of lamps in Watt is known. Please indicate precisely the number of light source in each category of power below :

35 W		60 W		125 W		400 W	
45 W		70 W		150 W		500 W	
50 W		80 W		200 W		750 W	
55 W		100 W		250 W		1000 W	

(nombre de lampes, nombre de points lumineux (pole) ou de colonnes)

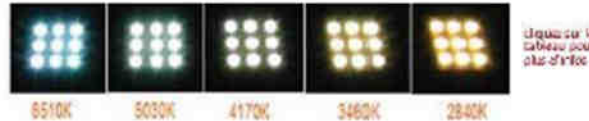
The sum of the lighting point at each power \_\_\_\_\_ should correspond to the total number of light sources indicated in page 1.

Case 2 : You have less information. Please indicate the mean electrical power in Watt : \_\_\_\_\_

- Are you using white light lamps e.g. high pressure mercury, metal halide, halogens, LED (correlated colour temperature > 3000°K)

• Yes • No

If yes, how many white lighting points do you have precisely ? : \_\_\_\_\_



à utiliser le tableau pour plus de 100

- If you use lighting spots in the ground, indicate how many : \_\_\_\_\_

- Is the town installing reflecting light system (called passive lighting : catadioptr) to favor switch-off, replace existing fixtures or avoid new installations ? • Yes • No

### Time use of public lightings

- Is there a cutoff of public lighting during night on your town ?  Yes  No if yes, switch-off hour : \_\_\_\_\_ and switch on in the morning (if this is the case) : \_\_\_\_\_ if the schedule is different during the week or seasons, indicate precisely the hours and periods : \_\_\_\_\_

If there is a switch-off of lights, is it : a complete one ?  Yes  No

a partial one ?  Yes  No if there is a partial switch-off, please indicate the exact number of light sources which remain lighted during the whole night : \_\_\_\_\_





## Orientation of luminous fluxes

► Your town is using light fixtures. Below, there is different kind of models classified in 8 different families in order to have a good idea of your public lighting equipment.



Please indicate precisely the number of light fixtures for each family of lightings :

**1** full-cut-off (bulb not visible far away from the source) with closed flat glass parallel to the ground

Number : \_\_\_\_\_

**2** full cut-off style fixtures with not visible bulb and *without lateral glasses* (a) or transparent glasses (b).

Number : (a) \_\_\_\_\_ (b) \_\_\_\_\_

**3** old style fixtures with visible bulb, lateral non transparent or curved glasses.

Number : \_\_\_\_\_

**4** fixtures with half bowl and Inclined fixtures

Number : \_\_\_\_\_

**5** Luminous sphere and similar fixtures.

Number : \_\_\_\_\_

**6** Indirect light fixtures.

Number : \_\_\_\_\_

**7** Vertical or 20°-30° inclined tube fixtures

Number : \_\_\_\_\_

**8** Ground spots and projectors for architectural lighting

Number : \_\_\_\_\_



## Flood and Architectural lighting

**Monuments :** Is there some lighted monuments ?

- with outdoor lightings  Yes  No if Yes, how many : \_\_\_\_\_ si Yes, with switch-off  Yes  No
- only with indoor lightings (vitraux)  Yes  No if Yes, how many : \_\_\_\_\_

Is there some natural places lighted ?  Yes  No if Yes, how many : \_\_\_\_\_ if Yes, with switch-off  Yes  No

Total installed power : \_\_\_\_\_ Watt

**Advertisement lighted beams :**

Is there some laser beam (DCA, skytracer, multi-beam) installed in your town ?  Yes  No

**Wind turbines :** Are wind turbine using white flash lights instead of red ones settled in your town ?  Yes  No

**Lighting Contest :** Is your town organizing lighted houses contest at the end of the year ?  Yes  No

**Christmas decorations :** Installez-vous des décorations lumineuses pour les fêtes de fin d'année ?  Yes  No donnez la durée des illuminations (10 jours centrés sur Noël et le Nouvel An ? 15 jours ? 20 jours ? un mois et plus ? )

- indiquez précisément la durée en nombre de jours : \_\_\_\_\_

Toujours concernant ces décorations lumineuses, ces dernières sont-elles coupées la nuit ?  Yes  No si Yes, indiquez l'horaire d'extinction : \_\_\_\_\_

- indiquez les particularités ne rentrant pas de ce cadre : \_\_\_\_\_

## Informations & Animations

### ← Consultation and pedagogy

Are the inhabitants of your town involved in the choice of lighting « ambiance » and levels of illuminance ?

Yes  No

Do you communicate about the advantages of having a quality of night to childrens and people in your town ?

Yes  No

### ← Night Biodiversity

Is your town involved or organizing events linked to the discovery of the night biodiversity ?

e.g. Owl's night / nocturnal walking / Nature fest

Yes  No if Yes, please precise \_\_\_\_\_

### ← Observation of stary night and nocturnal landscapes

Is your town involved in periodic events to get aware people of the quality of night environment? (public / partial or complete switch-off public lights night / observations of stars, planets and milky way e.g. Night of Stars / The day of the Night )

Yes  No if Yes, please precise \_\_\_\_\_



## \*Villes & Villages Etoilés\* promotes switching-off of lightings

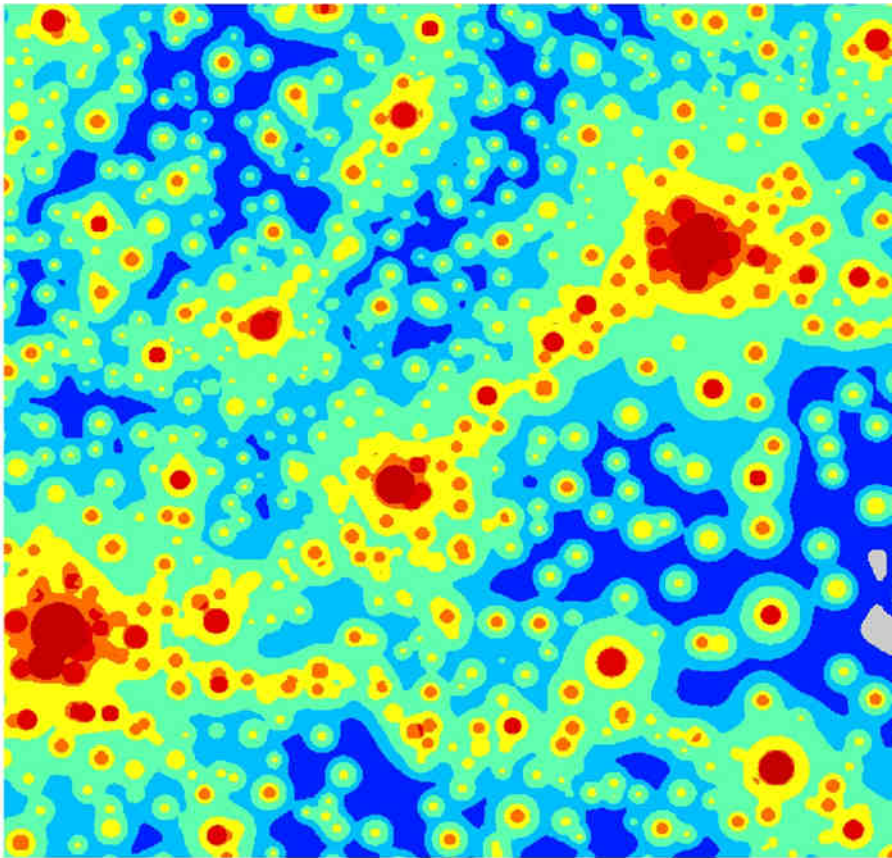
- At least 2000 towns in France switch off their lights in the second part of night !  
(typically after 23h-midnight)
- More than 1,3 millions french people is involved in this process
- From small villages (100 inhabitants) up to rather big towns such as Murs-Erigne (5500 inhabitants), Cerizay (4600 inhabitants), ....
- ... but also test of switching off lightings in some aeras such as residential ones (50%) of bigger cities such as Fontaines (22000 inhabitants), Joigny (10000 inhabitants) ...
- Main point of interest :
  - Energy savings and reduce the cost of public lighting
  - But more and more mayors are aware that this choice makes it possible to reestablish the natural diurnal/nocturnal cycle and thus protect the whole night ecosystem during a significant part of the night



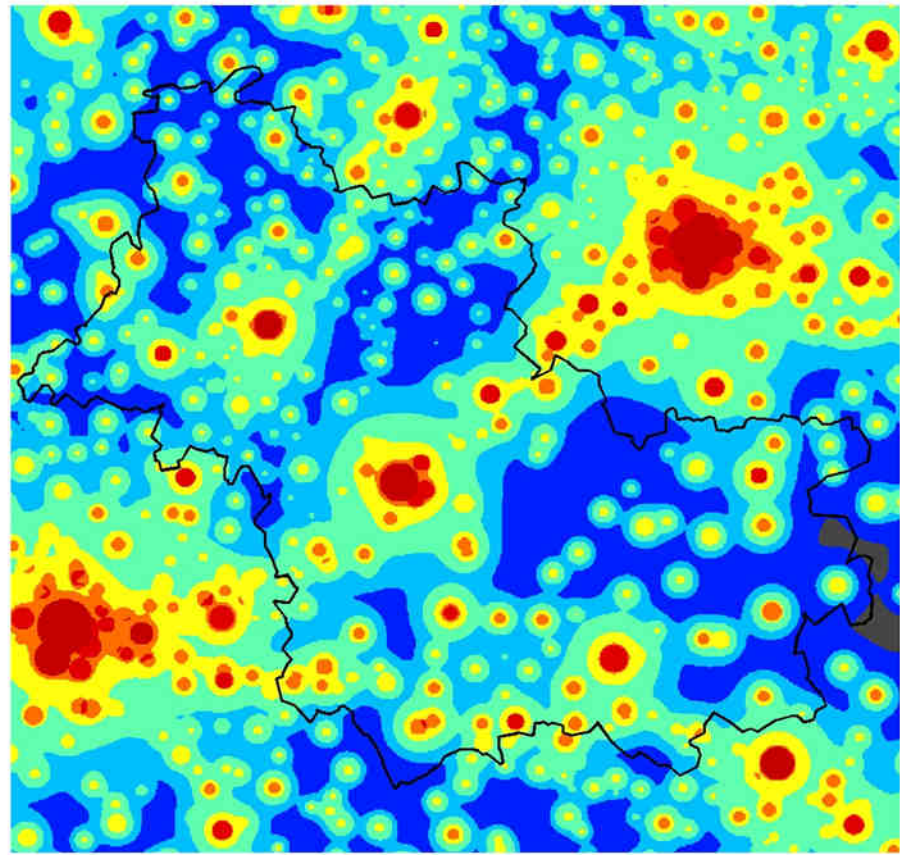


# Example in Loir & Cher

- 1/3 of the towns in this county are switching off lightings



© LICORNESS



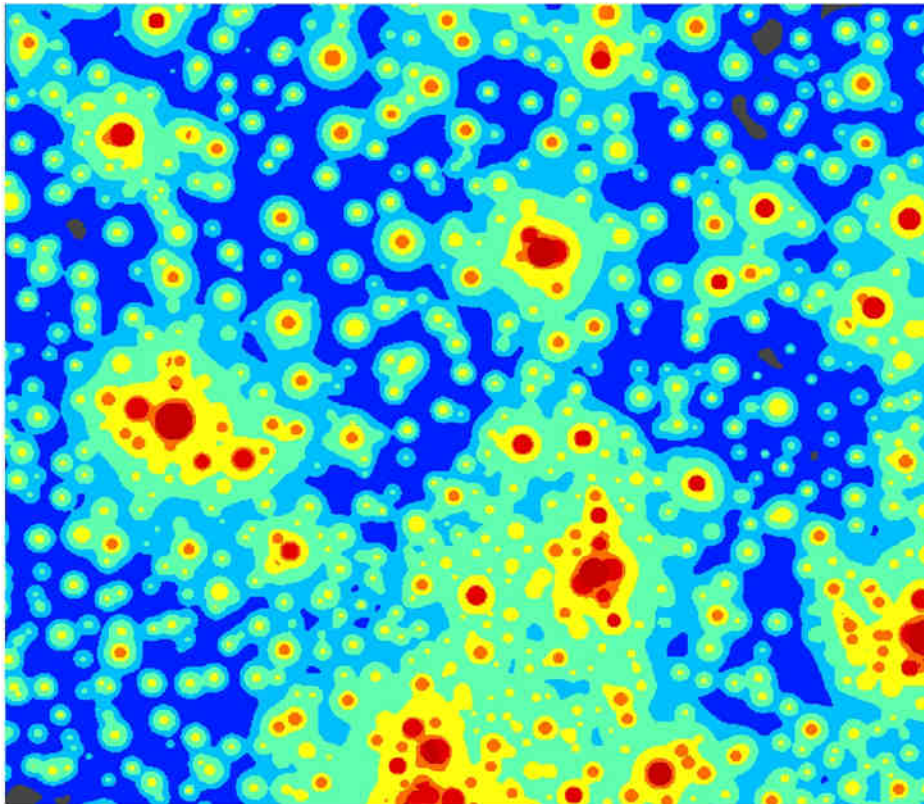
© LICORNESS



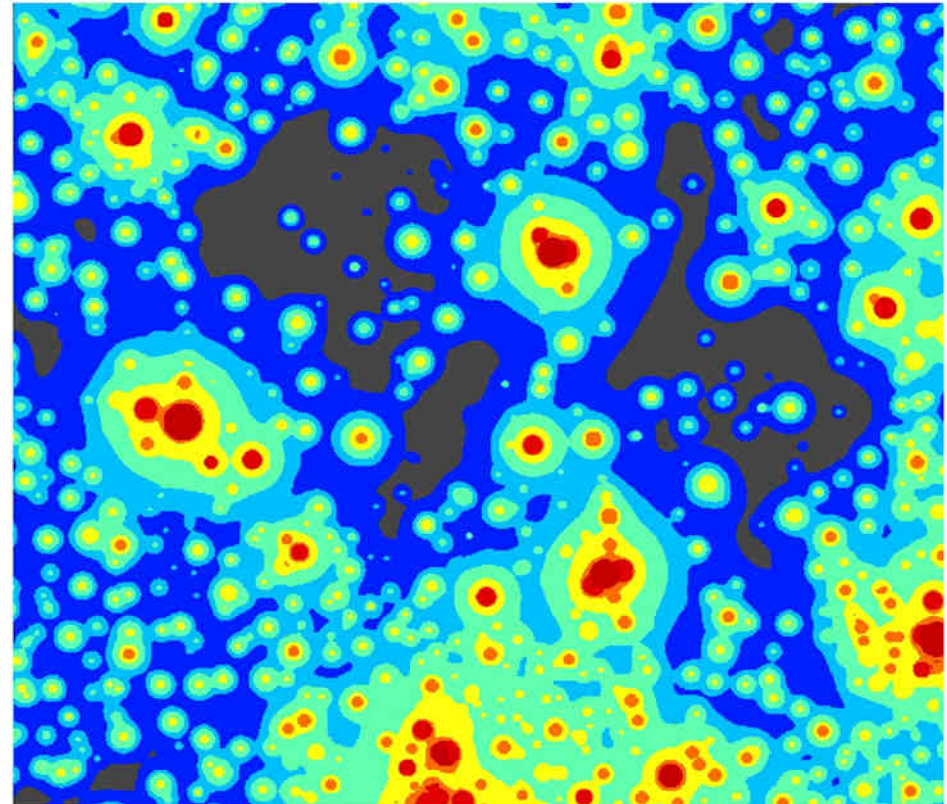


# Example in Allier

- 70% of the luminous flux is switching off in this county
- Many dark places appear with a negligible light pollution



© LICORNESS



© LICORNESS