



# Light Vision Province West-Flanders

Friedel Pas, President Preventie Lichthinder vzw,  
11<sup>th</sup> European Symposium for the Protection of the Night Sky, Octobre 6-8 2011,  
Osnabrück, Germany



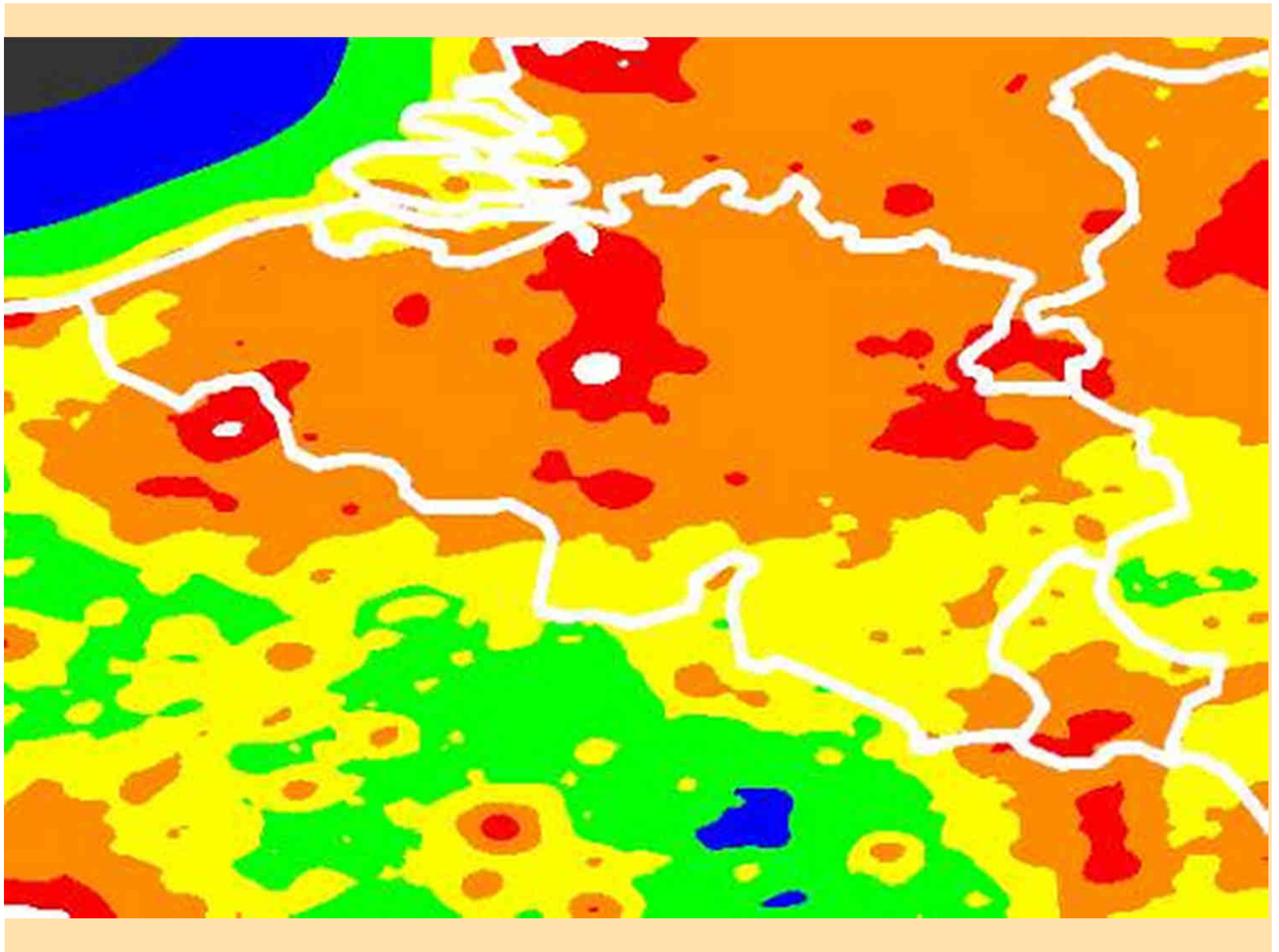
# Agenda

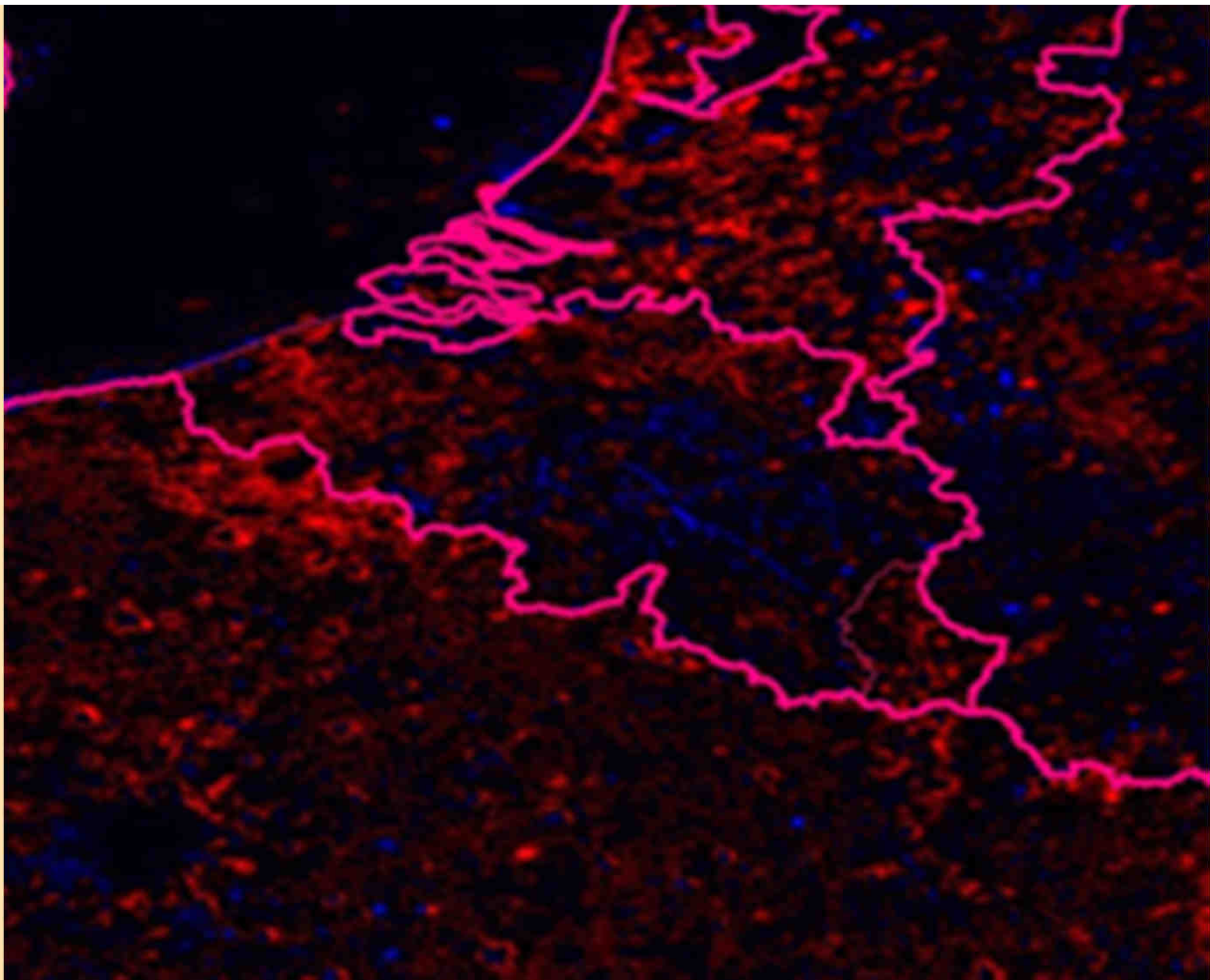
- History on light pollution in the province.
- Light vision
  - Why, purposes and partners
  - Focus
  - Types of areas
  - Key elements
  - Knowledge Platform
- Conclusions



# Policy opportunities

- Support and collaborating
  - Project Oudlandpolder
  - Knowledge platform lighting
- To inspire and fulfils example function
  - Make up light vision
- To stimulate
  - Example nuisance regulation
- Informing, raising awareness, advising

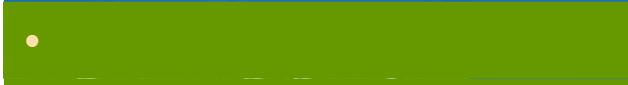








# de Oudlandpolder





# Project Oudlandpolder

- Collaboration between 3 municipalities and the province
- To reinforce and develops outside area
- Projects about the improvement of the quality of the landscape view, also on light pollution







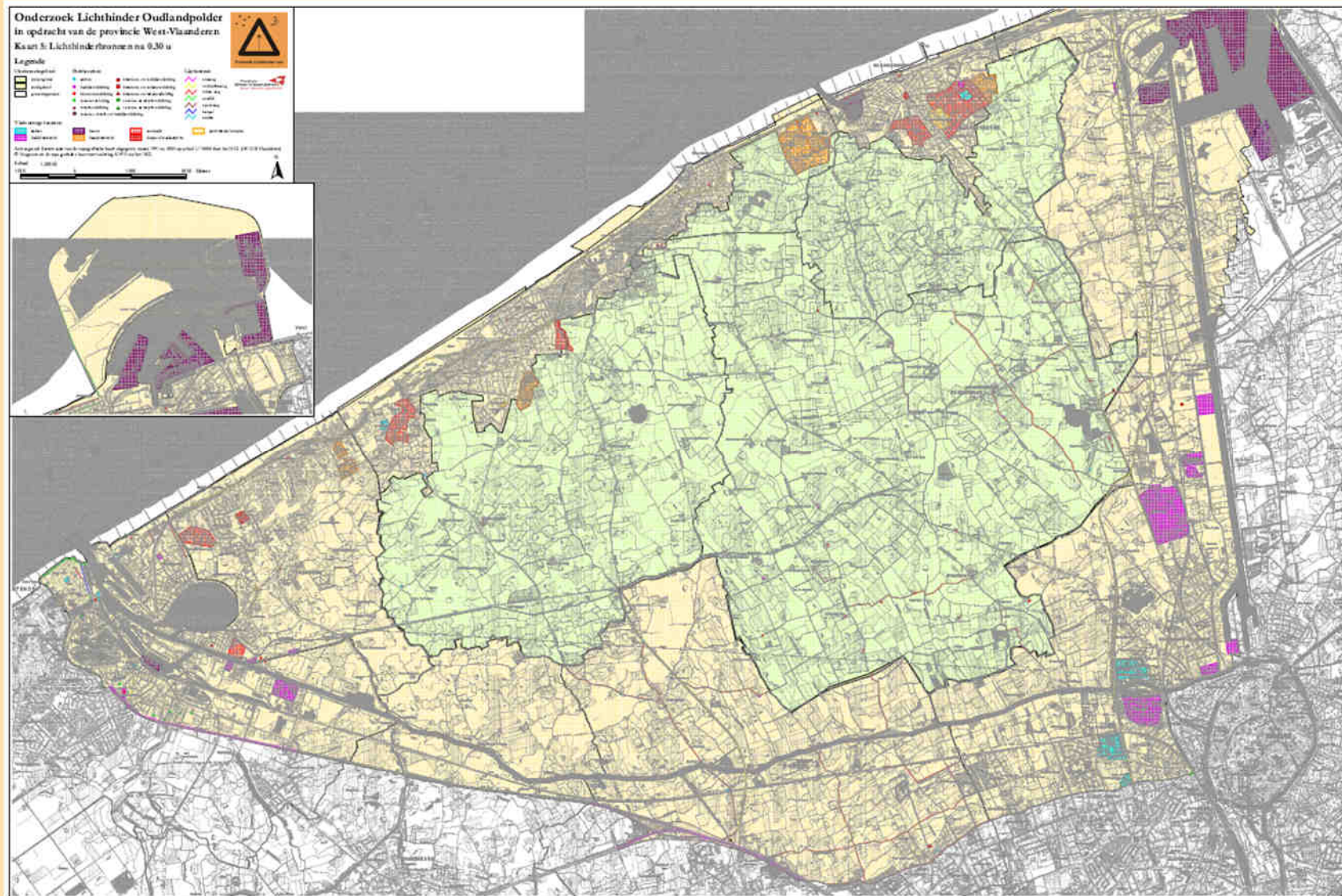














# Light Vision rural areas of West-Flanders







# The reason

- The rural landscape is here still relative dark  
➔ is under pressure by several projects  
(village beautification, new bicycle paths, ...)
- Increasing concern about energy consumption and light pollution.
- Quick evolution of regulations and techniques





# Study



- Province government and 3 partners (WVI, Intercommunale Leiedal en VLM)
- Study done by Omgeving and Atelier Roland Jéol
- Large steering committee (AWV, net managers, LNE, POM, vzw Preventie Lichthinder,...)



# Purpose

- Projects and realizations of Public lighting with more quality.
- Active applicable policy document
  - Guide for executing real projects.
  - Setting up and supporting pilot projects.



# Content of Light Vision document

- Informatively part
- Vision on public lighting in the rural landscape
- Lighting solution per type of area







# Vision on lighting rural landscape

- 4 quality requirements
  - Functionality
  - Experience value
  - Energy consumption
  - Light pollution
- Code good practices
  - 14 basis principles





# Lighting per area category (1)

- 9 types of areas
  - Passage and rural core on a road with a lot of traffic
  - Passage and rural core on a local road
  - Road between two villages
  - Residential area
  - Bicycle path
  - Churches, identity defining buildings and patrimony
  - Parking places
  - Sport fields
  - Company areas
  - Public green areas





## Lighting per area category(2)

- Policy and management context – theory part
- Purposes and principles – Code of good practices
- Practical examples – guiding aspects with technical fiche



# Basis principles (related to light pollution) Passages of villages

- In case of white light, only warm white light (<3000 K)
  - Support visibility of pedestrians (max. 7m)
  - Create port effect at entrances of the villages by lighting statue or valuable patrimony.
- Concept with less light pollution need to take.







# Basis principes Residential areas

- Use of dimming.





# Basis principes

## Roads between villages

- No lighting!
- Some exceptions of dangerous obstacles
- Or guide lighting for cyclists





# Basis principles

## Bicycling roads in open space

- No lighting for recreation use!
- Functional paths mostly not lighted
  - Places with a lot of traffic in part of the dark hours
  - Dynamic lighting
  - Limited in time.





# Basis principles

## Churches, identity defining buildings and patrimony

- Light only a limited selection based on value.
- Not light whole building, only creating accents off valuable elements.
- Switch off during night.



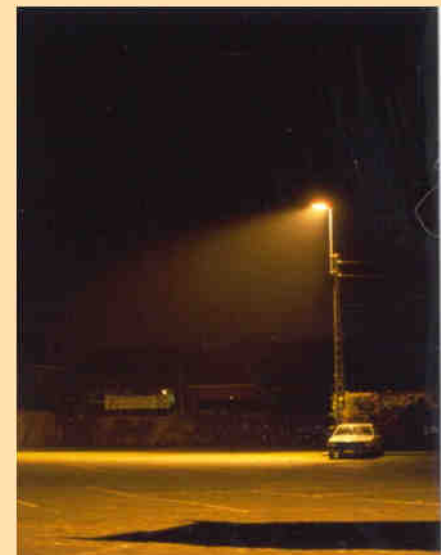




# Basis principes

## Parking places

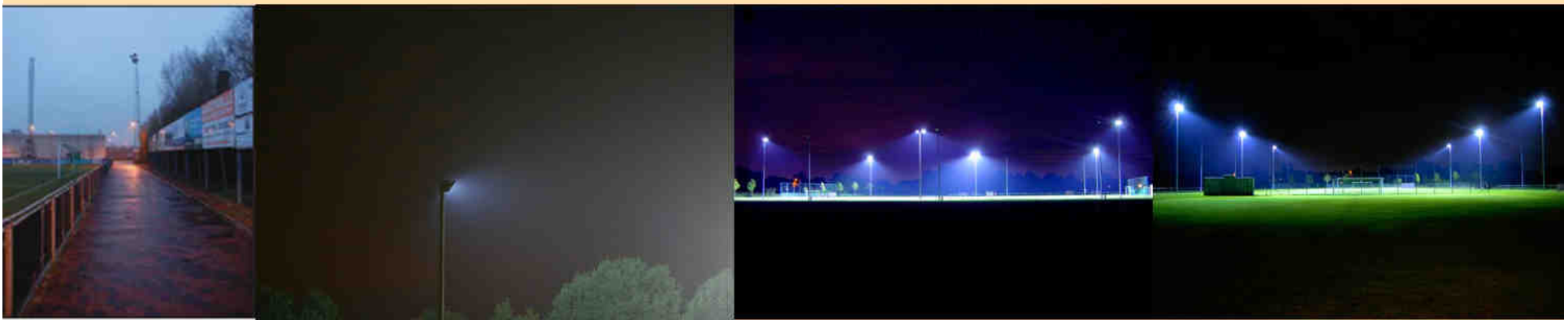
- No lighting when no social control
- Only lighting at places and locations that they are really used during the night
- Dimming and switching off depending of the use.





# Basis principes Sport fields

- No lighting when no activity
- No upward lighting
- Lighting levels not higher then need for competition level
- Regularly control on installation





# Basis principles Company areas

- Depends from the activities of the companies.
  - In case of no night activity, switching off public lighting
  - Locate companies with high activity together at the entrance of the area.





# Knowledge center

- AWW, net managers, LNE, POM, vzw Preventie Lichthinder,...
- Following up technical evolutions, investigate techniques and advices projects
- Info-moments to municipalities
- Education on Public Lighting



# Conclusions

- Our job is changing the market.
- Good legislation is the best way to do.
- Do not loose time while waiting on law.
  - Increase awareness
  - Educate and offer tools to do in the right way
  - Those examples show that the legislation is realistic and have clear benefits.



